

October 2007

Evidence-Based Programs Global Footprint

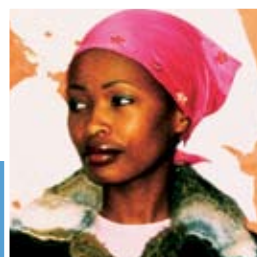
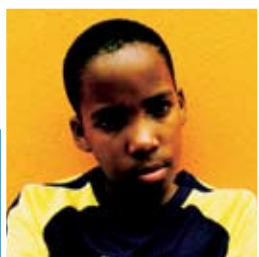
Presence	MST	FFT	MTFC	NFP	Combined
# states	32	37	11	23	44
# countries	11	3	5	1	18
# youth/families per year	19,000	30,000	1,000	13,000	63,000

Network	MST	FFT	MTFC	NFP	Combined
# teams	380	238	36	270	924
# therapists/nurses	1,140	1,170	N/A	750	3,060
# supervisors	380	80	N/A	143	603
# expert service consultants	54	20	9	23	106

Clinical Trials	MST	FFT	MTFC	NFP	Combined
	11	11	8	3	33

Research Funding Since Conception	MST	FFT	MTFC	NFP	Combined
	\$40M +	\$33M +	\$20M+	\$45M +	\$138M

Key Endorsements	MST	FFT	MTFC	NFP
Blueprints for Violence Prevention	•	•	•	•
U.S. Surgeon General	•	•	•	•
Washington State Institute for Public Policy	•	•	•	•
Medicaid	•			
Coalition for Evidence-Based Policy	•		•	•
Substance Abuse and Mental Health Services Administration	•		•	•
President's New Freedom Commission on Mental Health	•	•	•	•
Office of Juvenile Justice and Delinquency Prevention	•	•		•
National Institute on Drug Abuse	•	•		



October 2007

Evidence-Based Programs in the United States

State	FFT	MST	MTFC	NFP	State	FFT	MST	MTFC	NFP
Alabama	•	P	P	PN	Montana	•	P		
Alaska	P		P		Nebraska		•	N	P
Arizona	•	•	P	•	Nevada	•	I	N	I
Arkansas	•			PN	New Hampshire				
California	•	•	•	•	New Jersey	•	•		•
Colorado	•	•	•	•	New Mexico	•	•	•	I
Connecticut	•	•	•		New York	•	•	•	•
Delaware		•		I	North Carolina	•	•		•
District of Columbia	•	•	•	I	North Dakota				•
Florida	•	•	P	I	Ohio	•	•	•	•
Georgia	I	•		P	Oklahoma	•	•		•
Hawaii	•	•	•	I	Oregon	•	•	•	•
Idaho	•			I	Pennsylvania	•	•	•	•
Illinois	•	•		•	Rhode Island		•		I
Indiana	•		N	I	South Carolina	•	•		I
Iowa	•	P		I	South Dakota				•
Kansas	•	P	•	P	Tennessee		•		I
Kentucky	•	P		•	Texas	•	•		•
Louisiana	•	•	N	•	Utah	•			I
Maine	•	•	•	I	Vermont				I
Maryland	•	•		•	Virginia	•	•	PN	I
Massachusetts		•	N	I	Washington	•	•	•	•
Michigan	•	•	PI	•	West Virginia				I
Minnesota	•	•	P	•	Wisconsin	•	I		
Mississippi		P	N		Wyoming	•	•		•
Missouri		•		•					

Key:

- = in practice
- P = in past
- I = interest
- N = new interest

