



For Immediate Release

July 31, 2017

Contact: Dan Edwards (843) 343-8747

## Partnerships between Georgia Counties and Evidence-Based Associates Make Significant Statewide Impact

***Georgia counties that partnered with Evidence-Based Associates saw a 31% increased reduction in youth incarceration, compared to those that implemented the program on their own.***

According to a comprehensive report released in February, the **'Report of the Georgia Council on Criminal Justice Reform 2017'**, the State of Georgia saw significant reductions in juvenile commitments to Department of Juvenile Justice facilities statewide. Three counties that partnered with Evidence-Based Associates (EBA)—Bibb, Cherokee, and Chatham—saw reductions in youth incarceration of over 70% last year compared with the baseline year of 2012.

To encourage the implementation of evidence-based programs in the community, Georgia created a voluntary incentive grant program, aimed to help counties reduce their use of out-of-home placements by establishing effective community-based alternatives. Since first awarding grants to participating counties in 2013, the Juvenile Justice Incentive Grant Program (JJIGP) has directed more than \$30 million to support evidence-based programs throughout the state.

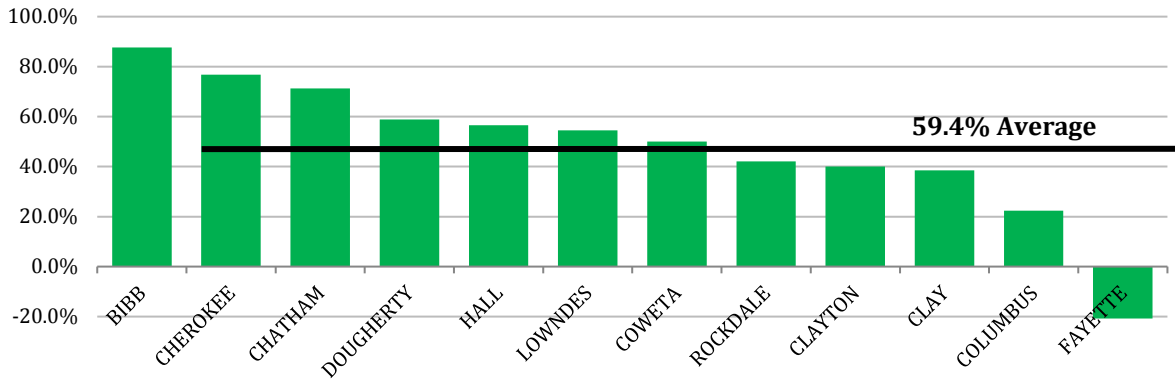
EBA has been a partner in the initiative from the beginning, collaborating with the office of Governor Nathan Deal, the Department of Juvenile Justice (DJJ), the Criminal Justice Coordinating Council (CJCC), and a total of 48 Georgia counties. EBA provides technical assistance and project management support, helping counties to identify appropriate evidence-based programs and to implement them with high fidelity to the program requirements.

During the 2016 program year, EBA entered into partnership agreements with 12 counties in order to serve system-involved youth and families via locally-administered evidence-based programs including: Functional Family Therapy (FFT); Multisystemic Therapy (MST); and Thinking for A Change (TfC). In its project management role, EBA ensured that all program components were delivered in strict adherence to all prescribed fidelity measures. EBA worked behind the scenes to ensure that top-tier evidence-based programs were implemented as intended and that all facets of implementation were rigorously managed, including provider selection, staff recruitment and training, treatment compliance, and fiscal oversight.

"The support services provided by EBA have greatly improved our delivery of evidence based services and has directly contributed to increased program family retention rates, decreased criminal charges, and decreased recidivism rates for the youth and families served," recalled Kevin Freeman, Ph.D., President and CEO at Grace Harbour based in Columbus, GA. "EBA has and continues to play a vital role in the programmatic success of our MST and FFT teams around the state."

Outcomes for counties partnering with EBA show significant improvement, compared to those that implemented the program on their own. EBA-supported grantees saw an average reduction in placements among all participating counties of 59.4%, while other grantees saw an average reduction of 45.5%.

### Reduction Percentages for EBA-Related Grantees



### Reduction Percentages for Non EBA-Related Grantees

